

Network Attached Storage Server Operating System

NASLite-FTP and NASLite-FTPG

User Manual

TABLE OF CONTENTS

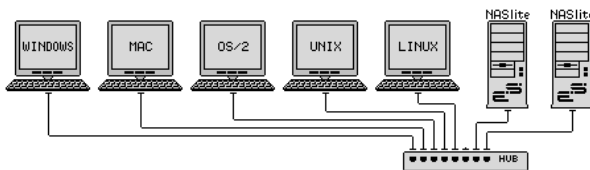
What is NASLite-FTP?	2
Why Use NASLite-FTP?	2
Getting NASLite-FTP.....	2
Basic Computer Requirements.....	2
Hardware Setup.....	2
Software Setup.....	3
NASLite-FTP Server Security.....	4
Using the NASLite-FTP Server.....	4
Disk Health and Monitoring.....	5
NASLite-FTP Content Backup.....	5
NASLite-FTP as an Appliance.....	5
NASLite-FTP Administration Utility.....	6
NASLite-FTP Status Info.....	6
NASLite-FTP Source Components.....	7
Copyrights and Trademarks	7
Licensing	7
Disclaimer.....	7

Revision History

Revision 1.0 June 23, 2004

What is NASLite-FTP?

NASLite-FTP is a Network Attached Storage (NAS) Server Operating System designed to transform a basic computer into a dedicated FTP file server. NASLite-FTP is intended primarily for use in a small business or home office network. It is capable of handling 50 or more users easily and efficiently even when running on modest hardware. By design, NASLite-FTP is an anonymous FTP file server and does not support features such as user management, and quotas. However, it is very easy to set-up and use.



Typical Multi-OS Network Configuration

Why Use NASLite-FTP?

NASLite-FTP is optimized to perform at maximum efficiency with minimum of hardware requirements. It's compact, stable and very reliable. NASLite-FTP offers the following features and benefits:

- Easy to operate and to administer
- Inexpensive to run and maintain
- Remote administration through TELNET
- Simple to use configuration menu
- Stable and reliable
- FTP and HTTP exported file systems
- BIOS independent fixed disk drive support
- S.M.A.R.T. support
- Large partition and file support
- Low hardware requirements
- Wide range of PCI hardware support (ISA and EISA not supported)

NASLite-FTP is well-suited for re-using older PCs that are still operational but are too limited or slow for use as desktop computers. In addition, NASLite-FTP enables older computers with BIOS limitations to use contemporary, large-capacity IDE fixed disk drives without the need for additional hardware.

For example, with NASLite-FTP you can take a retired Pentium 200MHz computer, remove the old fixed disk drives, CD-ROMs, etc., install four 160GB fixed disk drives and have a fast, reliable 640GB NASLite-FTP file server for the cost of the fixed disk drives.

NOTE: *NASLite-FTP supports only IDE fixed disk drives. Drives such as CD, DVD and Iomega-ZIP as well as SCSI, SATA, USB, or FireWire connected fixed disk drives are not supported.*

Getting NASLite-FTP

NASLite-FTP is distributed on a single 3.5 inch, 1.72MB floppy disk. A ready-to-use floppy disk may be ordered from the Server Elements (www.serverelements.com) website for a fee. The floppy disk image file is also available for download on the website.

Basic Computer Requirements

NASLite-FTP is a network file server, so a fast computer is usually not necessary. Basic requirements are:

- 486DX or better processor
- PCI bus
- 16M or more of RAM
- 1 to 4 IDE fixed disk drives (any size)
- PCI or on-board network interface adapter
- 3.5" HD floppy disk drive

In dedicated file servers, the performance is most often limited by the network speed. Fast processors will not improve performance and therefore are not required. A 200 MHz Pentium with 64M of RAM will be more than capable of servicing a typical small office.

Hardware Setup

If you are preparing a computer for conversion to a NASLite-FTP file server and wish to replace or add fixed disk drives, do this now and be sure the computer will boot with the new fixed disk drives installed.

NOTE: *It's recommended that you set the BIOS IDE fixed disk drive configuration for all IDE drives to "NOT INSTALLED" in order to avoid boot problems. NASLite-FTP does not use the BIOS to identify the available fixed disk drives. Computers with older BIOS may refuse to boot if unable to properly identify the installed fixed disk drives.*

NOTE: *NASLite-FTPG provides improved fixed disk drive performance through enhanced IDE support.*

To connect the NASLite-FTP server to the network, a PCI network interface is required. Many computers utilize a motherboard with a built-in or on-board PCI network interface and therefore will work fine. A general list of supported PCI network interface adapters is as follows:

- 3COM
- Adaptec Starfire / DuraLAN
- AMD PCnet32 / 8111
- Broadcom 4400
- Davicom
- DECchip
- Digi International RightSwitch
- DIGITAL
- EtherExpress
- HP PCLAN
- Mysom MTD-800 series
- National Semiconductor DP83810 series
- NE2000 compatible
- nForce
- RealTek
- Recal-Interlan
- SiS 900/7016
- SMC
- Sundance Alta
- TI ThunderLAN
- Tulip
- VIA Rhine
- Western Digital
- Winbond W89c840

NASLite-FTPG provides improved network performance by supporting a number of common gigabit network interfaces. NASLite-FTPG supports the following gigabit network interfaces:

- 3Com 3C985
- Alteon AceNIC
- Broadcom Tigon3
- D-Link DL2000-based
- Intel(R) PRO/1000
- Marvell Yukon Chipset

- National Semiconductor DP83820
- NetGear GA620
- Packet Engines Hamachi GNIC-II
- Packet Engines Yellowfin
- Realtek 8169
- SysKconnect SK-98xx

NOTE: *NASLite-FTP and NASLite-FTPG differ only in the network interface adapters they support. NASLite-FTP does not support gigabit network interface adapters while NASLite-FTPG supports only gigabit network interface adapters. If you intend to use a gigabit network interface adapter in your NASLite-FTP server, then use NASLite-FTPG.*

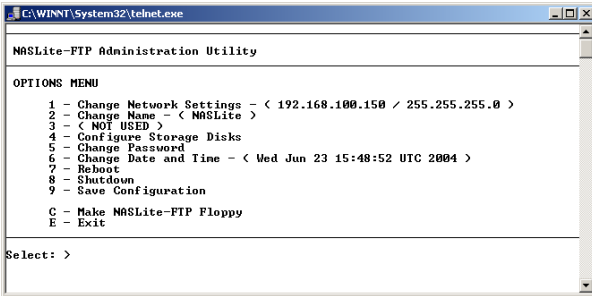
Software Setup

For the initial NASLite-FTP software setup, you'll need to have a monitor and a keyboard connected to the computer. Boot the computer using the NASLite-FTP floppy disk. After the boot sequence is complete, the initial login screen is displayed.

NOTE: *The NASLite-FTP floppy disk is formatted to 1.72MB. On rare occasions, the computer BIOS may not be capable of booting a 1.72MB formatted floppy disk.*

The first thing to make sure is that the network interface was detected and properly initialized. If the **Server - Network Initialized...** message is displayed, and the READY audible prompt generated (see NASLite-FTP as an Appliance), then the network interface is supported and ready. If NASLite-FTP fails to detect and initialize the network interface, then NASLite-FTP will generate the CHECK NETWORK audible prompt. In that case, the network interface may be damaged or not supported. A compatible, working network interface must be installed.

The login name is **admin** (in lower case letters). The default admin password is **nas** (also in lower case letters). When you have successfully logged in, the NASLite-FTP Administration Utility Options Menu will be displayed. All configuration settings are done using this menu.



NASLite-FTP Administration Utility Options Menu

1 - Configure Network Settings - NASLite-FTP network configuration consists of setting the IP Address (Option 1). Make sure that the IP address is unique and is in the same subnet as the intended client computers. The network settings are stored on the NASLite-FTP floppy disk, so when you have set the IP address, the settings must be saved (Option 9) with the NASLite-FTP floppy disk in the floppy disk drive.

2 - Configure Disks - NASLite-FTP fixed disk drives need to be set up next (Option 4). The Configure Storage Disks menu screen (Option 4) explains the process in detail. Configuration will reformat each fixed disk drive. This may take a few minutes, depending on the disk capacity. You can optionally scan for bad blocks. We recommend this even on newer disks.

3 - Apply Configuration - To apply the new configuration settings the NASLite-FTP server must be rebooted (Option 7).

Assuming the configuration settings are correct, the NASLite-FTP server should now be online and ready for use. You should be able to connect to the NASLite-FTP server via any FTP client. For example if we assume that your NASLite-FTP server IP address is set to 192.168.1.1, then entering `ftp://192.168.1.1` in the Windows Explorer's address bar will access the server contents. Since the server is read/write enabled, files and folders may be dragged-and-dropped to and from the NASLite-FTP server window.

It is a good idea to log in to the NASLite-FTP server using TELNET from any computer on your network at this point. To login via TELNET from Windows, follow these steps:

1. Click Start, then click Run.
2. Type telnet and a space and then type the IP address of the NASLite-FTP server. For example: `telnet 192.168.1.1`, then click OK
3. You should get the login prompt. Login and you should get the NASLite-FTP Administration Utility Options Menu.
4. Log out (Option E).
5. Your TELNET window will close.

NASLite-FTP Server Security

The storage made available by NASLite-FTP can be accessed anonymously and is not restricted in any way. Any user capable of accessing the NASLite-FTP server can read and write openly. Only the NASLite-FTP Administration Utility is password protected in order to restrict unauthorized access to the Options Menu.

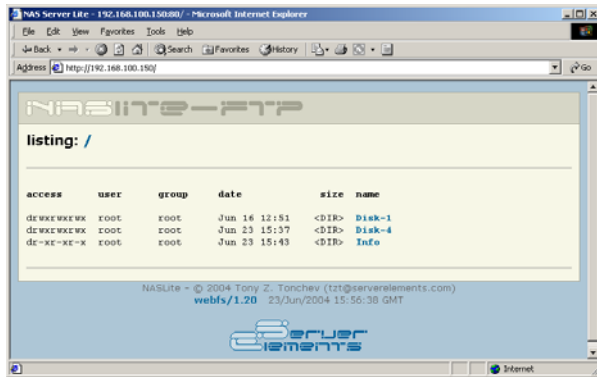
Using the NASLite-FTP Server

NASLite-FTP will name all installed and configured fixed disk drives available on the server computer as **Disk-1** through **Disk-4** respectively. These names are fixed and cannot be changed. All **Disk-X** folders are read/write enabled and are accessible by all users. The **Info** folder is made available by default, and is read-only.

Name ▲	Size	Type	Modified
Folder Disk-1		File Folder	6/16/2004 8:51 AM
Folder Disk-4		File Folder	6/23/2004 11:37 AM
Folder Info		File Folder	6/23/2004 11:43 AM

Typical NASLite-FTP Shared Folders

The NASLite-FTP storage contents are also made available to the local network via HTTP (port 80) and can be accessed using any web browser. For example let's assume that your NASLite-FTP server IP address is 192.168.1.1. Entering `http://192.168.1.1` in the browsers' address bar can then access the server content inside the browser window.



Typical NASLite-FTP HTTP Content

NOTE: Files stored on the NASLite-FTP storage disks are made available to all network users via HTTP. That allows any Operating System to access the NASLite-FTP contents via a web browser, making it ideal for a PDF, image, video or an MP3 file library server.

Disk Health and Monitoring

When the NASLite-FTP server boots, each fixed disk drive filesystem is identified and checked. If a filesystem is identified and maintenance is scheduled, NASLite-FTP automatically analyzes and attempts to fix any existing filesystem problems before storage is made available for use.

NOTE: When a fixed disk drive filesystem is being checked, NASLite-FTP storage will not be available for use. The pending check may take anywhere from 1 to 20 or more minutes depending on the fixed disk drive size and contents. A pending check can be identified by observing the associated fixed disk drive activity LED shortly after booting NASLite. The associated fixed disk drive activity LED will be continuously on for the duration of the check.

NASLite-FTP also monitors the health of the storage fixed disk drives using Self-Monitoring, Analysis and Reporting Technology (SMART) built into most modern ATA fixed disk drives. In many cases, NASLite-FTP will provide advanced warning of fixed disk drive degradation and failure. When NASLite-FTP first boots, it initiates a SMART Self-test for each one of the configured storage fixed disk drives. The SMART status of the configured storage fixed disk drives is also checked every 5 minutes. The fixed disk drives SMART status can be viewed using

the NASLite-FTP Status Info made available through the **Info** folder.

In the event of approaching failure, NASLite-FTP will begin generating a 5-beep audible alarm every 5 minutes. At that time it's best to take the necessary precautions to remove important data from the affected disk.

NASLite-FTP Content Backup

NASLite-FTP does not provide a built-in backup. Backup of content residing on a NASLite-FTP server is best performed from a client computer.

NASLite-FTP as an Appliance

NASLite-FTP is well suited for operation as a network appliance, remotely administered and without an attached monitor and keyboard. Remote administration can be performed from any computer on the same network via TELNET.

To compensate for the lack of visible indicators on the physical server, NASLite-FTP employs a number of audible prompts that indicate states and or conditions. The audible prompts are generated via the PC speaker, so no additional sound hardware is necessary. The table below provides a list of audible prompts and their corresponding states.

AUDIBLE PROMPT	STATE
2 x 300Hz + 1 x 700Hz	READY - Server is online and ready for use.
2 x 700Hz + 1 x 300Hz	SHUTDOWN - Power may be shut down manually in 5 seconds.
5 x 200Hz	CHECK NETWORK - Unable to detect or initialize network interface card.
3 x 700Hz + 3 x 300Hz	CHECK DISK - Fixed disk drive fails overall SMART self-assessment.

NOTE: The information provided in the AUDIBLE PROMPT column represents the number of beeps and their pitch. For example, when the NASLite-FTP server is ready for use, it will generate a READY

prompt by sounding two 300Hz beeps followed by a single 700Hz beep.

NASLite-FTP Administration Utility

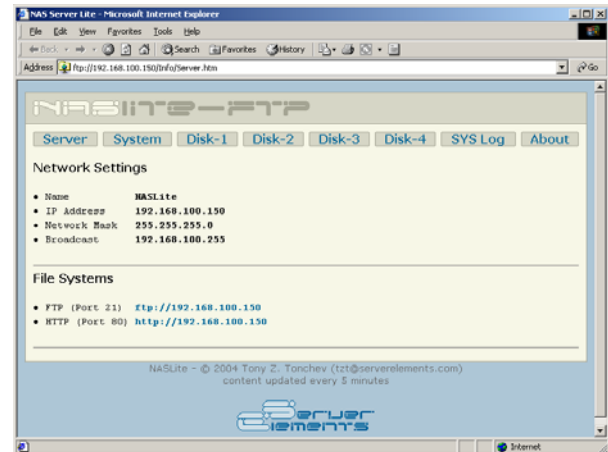
The NASLite-FTP Administration Utility is a console-based menu-driven utility that can be accessed at the server computer via a locally connected monitor and keyboard, or remotely through TELNET. The NASLite-FTP Administration Utility menu options are as follows:

- **Change Network Settings** - Configure IP address and netmask.
- **Change Name** - Set unique server name.
- **Configure Storage Disks** - Format available fixed disk drives for use as NASLite-FTP storage.
- **Change Password** - Change the **admin** user password. The default admin password is **nas**.
- **Change Date and Time** - Set NASLite-FTP computer date and time. Provided values must be GMT time.
- **Reboot** - Reboots the NASLite-FTP server.
- **Shutdown** - Shuts down the NASLite-FTP server.
- **Save Configuration** - Saves network configuration settings to the NASLite-FTP floppy disk.
- **Make NASLite-FTP Floppy** - Facilitates the creation of NASLite-FTP floppy disk copies.
- **Exit** - Exits the NASLite-FTP Administration Utility Options Menu.

NASLite-FTP Status Info

NASLite-FTP exports a special **Info** folder for the purpose of providing server status information. The status information is made available via a number of HTML pages that are updated every 5 minutes. To access the server status pages, click to view any of the HTML files from the Info folder. Your default

HTML browser will then open the selected HTML page. At that time you can navigate between the individual status pages by using the provided link buttons.



Typical NASLite-FTP Status Info Page

The NASLite-FTP Info folder offers the following status information pages:

- **Server** – Provides information about server network settings.
- **System** – Displays information about the server OS, uptime, load, CPU, memory, fixed disk drive usage and network interface status.
- **Disk-1** - Displays Disk 1 initialization messages, hardware description and S.M.A.R.T. status information if applicable. Disk 1 is the primary (master) fixed disk drive on the primary IDE controller.
- **Disk-2** - Displays Disk 2 initialization messages, hardware description and S.M.A.R.T. status information if applicable. Disk 2 is the secondary (slave) fixed disk drive on the primary IDE controller.
- **Disk-3** - Displays Disk 3 initialization messages, hardware description and S.M.A.R.T. status information if applicable. Disk 3 is the primary (master) fixed disk drive on the secondary IDE controller.

- **Disk-4** - Displays Disk 4 initialization messages, hardware description and S.M.A.R.T. status information if applicable. Disk 4 is the secondary (slave) fixed disk drive on the secondary IDE controller.
- **SYS Log** – Displays the current system messages log file.
- **About** – Contains general NASLite-FTP information.

NASLite-FTP Source Components



Based on proven software technology, NASLite-FTP is built using one or more components of the following:

- **Linux Kernel** (www.kernel.org) - POSIX compliant Unix clone
- **vsftpd** (vsftpd.beasts.org) - FTP services
- **uClibc** (www.uclibc.org) - Compact C library
- **BusyBox** (www.busybox.net) - Compact Unix utilities
- **e2fsprogs** (e2fsprogs.sourceforge.net) - Second extended file system utilities
- **webfs** (www.bytesex.org) - Simple HTTP Server
- **smartmontools** (smartmontools.sourceforge.net) - S.M.A.R.T. utility toolset.

Copyrights and Trademarks

© 2004 Tony Z. Tonchev (tzt@serverelements.com)

This manual may be reproduced in whole or in part, without fee, subject to the following restrictions:

- The copyright notice above and this permission notice must be preserved complete on all complete or partial copies.
- Any translation or derived work must be approved by the author in writing before

distribution.

- If you distribute this work in part, instructions and means for obtaining the complete version of this manual must be included.
- Small portions may be reproduced as illustrations for reviews or quotes in other works without this permission notice if proper citation is given.

Licensing

The NASLite-FTP software consists of Open Source software and proprietary Server Elements software. The Open Source components are freely distributed under the respective Open Source licenses. Server Elements software is distributed under Server Elements' terms.

Disclaimer

This document is provided ``AS IS'', with no express or implied warranties. Use the information in this document at your own risk.

The NASLite-FTP software is provided "AS IS", with no express or implied warranties. Use the NASLite-FTP software at your own risk.